

GOODYEAR[®]

PRODUCT CATALOGUE



GOODYEAR COMPANY INTRODUCTION

About Goodyear

The Goodyear Tire & Rubber Company was founded in 1898 by 38-year-old Frank Sieberling. Now, Goodyear is one of the world's largest tire companies. It employs about 62,000 people and manufactures its products in 46 facilities in 21 countries around the world. Its two Innovation Centers in Akron, Ohio, and Colmar-Berg, Luxembourg, strive to develop state-of-the-art products and services that set the technology and performance standard for the industry. For more information about Goodyear and its products, go to www.goodyear.com/corporate.

100 Years of Safety Innovation in the Philippines

Goodyear entered the Philippines just after the end of World War I in 1919 and established its Southeast Asia distribution center and warehouse. At this time, tires were shipped from the United States to Manila and sold both locally and to other countries such as China, Japan, the then Dutch Indies and other adjacent countries.

Fast forward to 2019, Goodyear Philippines marked its 100th year milestone. With 100 years of driving tire innovation and safety in the Philippines, Goodyear has had a positive impact on the Filipino driving experience, both on- and off-road.





GOODYEAR PHILIPPINES KEY MILESTONES

ESTABLISHED THE DISTRIBUTION CENTER AND WAREHOUSE



1919

1949

ESTABLISHED THE NEW FACTORY AND HQ IN THE PORT AREA



1956

ESTABLISHED THE LAS PIÑAS PLANT



1981

BIGGEST TIRE PRODUCED 24.00-35 EARTH MOVER



1987

ESTABLISHED THE FIRST GOODYEAR SERVITEK STORE



1995

POPEMOBILE FITTED WITH GOODYEAR TIRES FOR THE WORLD YOUTH DAY



1998

ESTABLISHED THE FIRST TYPE PRO STORE



2010

INAUGURATION OF GOODYEAR PHILIPPINES TAGUIG OFFICE



2016

LAUNCHED THE GOODYEAR AUTOCARE MODERN RETAIL FORMAT



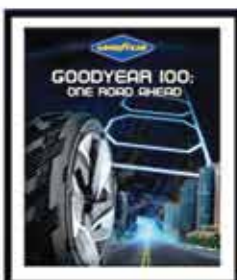
2017

LAUNCHED THE GOODYEAR WORRY FREE ASSURANCE PROGRAM



2019

100 YEARS ANNIVERSARY



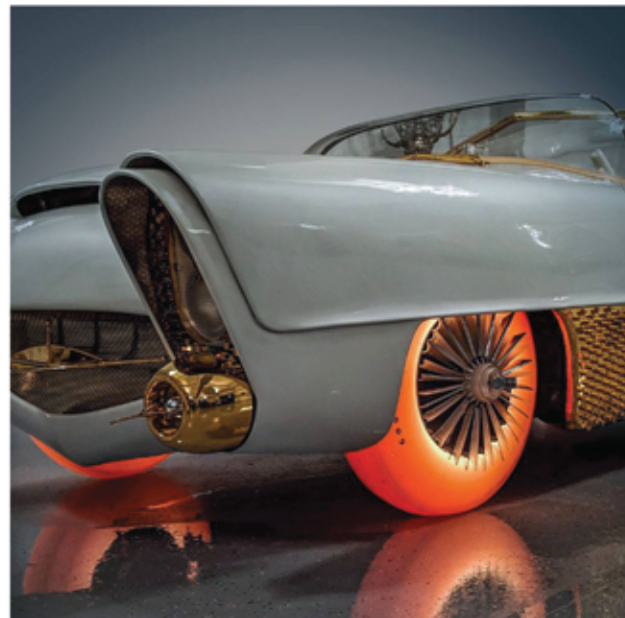
GOODYEAR INNOVATION



Goodyear introduces its latest concept tire at the 2019 Geneva International Motor Show



The Goodyear AERO concept is a two-in-one tire designed for the autonomous, flying cars of the future. This concept would work both as a tire for driving on the road and a “propeller” for flying through the sky.



Goodyear and Klairmont Collections unveil restored Golden Sahara II on translucent Goodyear tires at the 2019 Geneva International Motor Show



In collaboration with Klairmont Collections, Goodyear unveiled the restored Golden Sahara II at the 2019 Geneva International Motor Show. An iconic custom car of the 1950s and 60s, the Golden Sahara II was one of the first concepts of autonomous vehicles and was fitted with glowing, see-through tires that were custom developed by Goodyear.



Lexus EV concept car equipped with Goodyear concept tires at the 2019 Tokyo Motor Show

Concept tires developed by Goodyear for the EV concept car was released at the Lexus booth at the 46th Tokyo Motor Show 2019.

The tires feature a tread design and cross section developed using Goodyear's aerodynamic technology. Advanced fins covered with fine velvet like owl wings are used on the tread side of the body to generate an effective airflow cooling EV motor.



Celebrating 50 years of moon exploration

One pair of tires for Goodyear, one giant leap for the future of mobility: almost 50 years ago, Goodyear's non-pneumatic XLTs were the first to ever leave a tire track on the moon. The 1950s and 60s were a period of intense innovation for Goodyear as it actively worked with pioneers to drive change and discovery. To this day, Goodyear has never seized reinventing both itself and mobility by creating and presenting state-of-the-art tires.





S P O R T S P E R F O R M A N C E

GOODYEAR.



**EAGLE F1
DIRECTIONAL 5**



**EAGLE F1
ASYMMETRIC 2**



**EAGLE F1
ASYMMETRIC 3**



EAGLE F1 DIRECTIONAL 5

**THE NEW ICON OF
STYLE AND CONTROL**

with SPORTGRIP TECHNOLOGY



Excellent
Handling



Superior
Grip



Wet
Performance



GOODYEAR

EAGLE F1 DIRECTIONAL 5



with **SPORTGRIP TECHNOLOGY**



HUG THE ROAD

A solid center line rib for more responsive steering and outstanding grip lets you hug the road.



TAKE THAT CORNER

A continuous shoulder rib which reduces deformation when cornering for enhanced grip.



CONQUER THE WET

Race-inspired tread compound provides outstanding grip on wet roads.



AVAILABLE SIZES

TIRE SIZE	MAX LOAD / TIRE	CAR FITMENT
195/50R15	82	Chevrolet Aveo
195/55R15	85	
205/45R16	83	Mazda 3, Hyundai Accent, Ford Lynx
205/50R16	87	Ford Focus, Ford EcoSport, Honda Civic, Toyota Corolla Altis, BMW 118d, Chevrolet Sonic, Hyundai Elantra, Mitsubishi Lancer EX
205/55R16	91	Ford Focus, Honda Civic, Toyota Corolla Altis, Mitsubishi Xpander, Hyundai Accent, Kia Forte, Volkswagen Lavida
205/45R17	84	Honda CR-Z, Kia Rio, Toyota Vios TRD Sportivo, Mazda MX-5
215/40R17	83	Kia Pride/Rio
215/45R17	91	Honda Civic, Mazda 6, Hyundai Elantra, Subaru BRZ, Toyota 86, Toyota Corolla Altis
225/55R17	101	BMW 3 Series, BMW 5 Series, Subaru Forester
225/40R18	92	Volkswagen Golf GTI, Hyundai Veloster
245/45R18	100	Mercedes-Benz S500, Mercedes-Benz E200, Mercedes-Benz V220, Mercedes-Benz E-Class, BMW 520d, Audi A5, Chevrolet Malibu



***EAGLE F1* ASYMMETRIC 2**

SUPERIOR GRIP

TO HELP YOU BRAKE

3 METERS SOONER ON WET ROADS

with ACTIVEBRAKING TECHNOLOGY



Outstanding
Braking



Superior
Grip



Wet
Performance

GOODYEAR



EAGLE F1 ASYMMETRIC 2

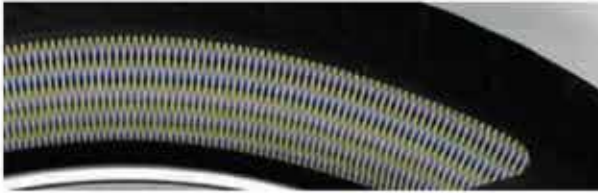


with ACTIVEBRAKING TECHNOLOGY



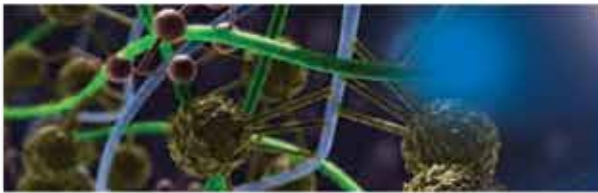
ENHANCED ROAD TRACTION

Innovative 3-D block design in the tread expands under braking conditions, increasing tire road contact.



MORE STOPPING POWER

Cross plies carcass structure increases torsional stiffness around the braking axle for more stopping power.



ENHANCED WET GRIP

Race-inspired tread compound provides outstanding grip on wet roads.



AVAILABLE SIZES

TIRE SIZE	MAX LOAD / TIRE	CAR FITMENT
215/45R17	91	Honda Civic, Mazda 6, Hyundai Elantra, Subaru BRZ, Toyota 86, Toyota Corolla Altis
225/45R17	94	BMW 3 Series, Mercedes-Benz C180/C200/ C220, Hyundai Elantra, Kia Forte
225/40R18	92	Volkswagen Golf GTI, Hyundai Veloster
235/40R18	95	Hyundai Sonata, Honda Civic RS Turbo
255/35R18	94	Mercedes-Benz E-Class
265/45ZR18	101	Porsche Boxster/Cayman 2013 (Rear)
235/35R19	91	
235/40ZR19	92	Porsche Boxster/Cayman 2016 (Front)
245/35R19	93	
265/40ZR19	98	Porsche Boxster/Cayman 2016 (Rear)
235/35ZR20	88	Porsche Boxster/Cayman, Lexus, Mercedes-Benz S400/Maybach S500/E250/C220/S500
265/35ZR20	95	Porsche Panamera (Front)



***EAGLE F1* ASYMMETRIC 3**

STAY IN CONTROL

ENJOY YOUR JOURNEY

with GRIP BOOSTER TECHNOLOGY



Superior
Wet Grip



Braking
Performance



Handling
Performance

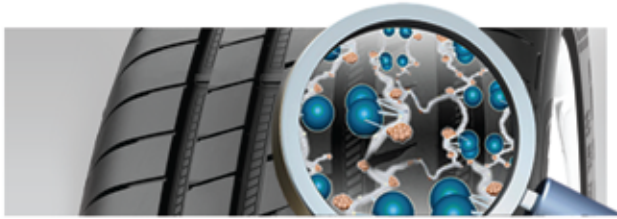
GOODYEAR



EAGLE F1 ASYMMETRIC 3

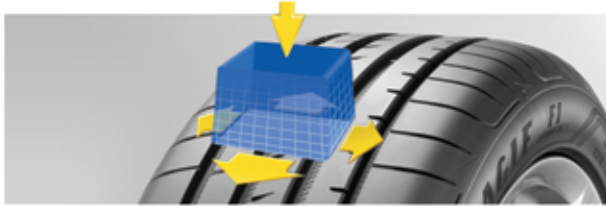


with GRIP BOOSTER TECHNOLOGY



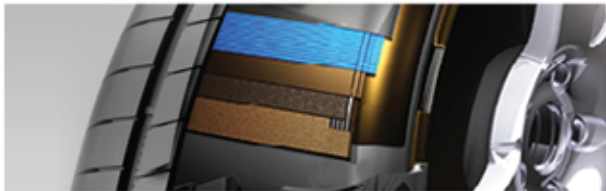
SUPERIOR WET GRIP

The Grip Booster compound used for the Eagle F1 Asymmetric 3, is made with adhesive resin to increase stickiness with the surface. This delivers better grip for braking and handling on wet and dry roads.



BRAKING PERFORMANCE

With Active Braking Technology, the contact surface and grip increases when braking. This increased contact with the ground provides you with shorter braking distances on wet and dry roads.



HANDLING PERFORMANCE

The Reinforced Construction technology delivers a stronger lightweight construction improving handling, cornering performance, tread wear and fuel efficiency.



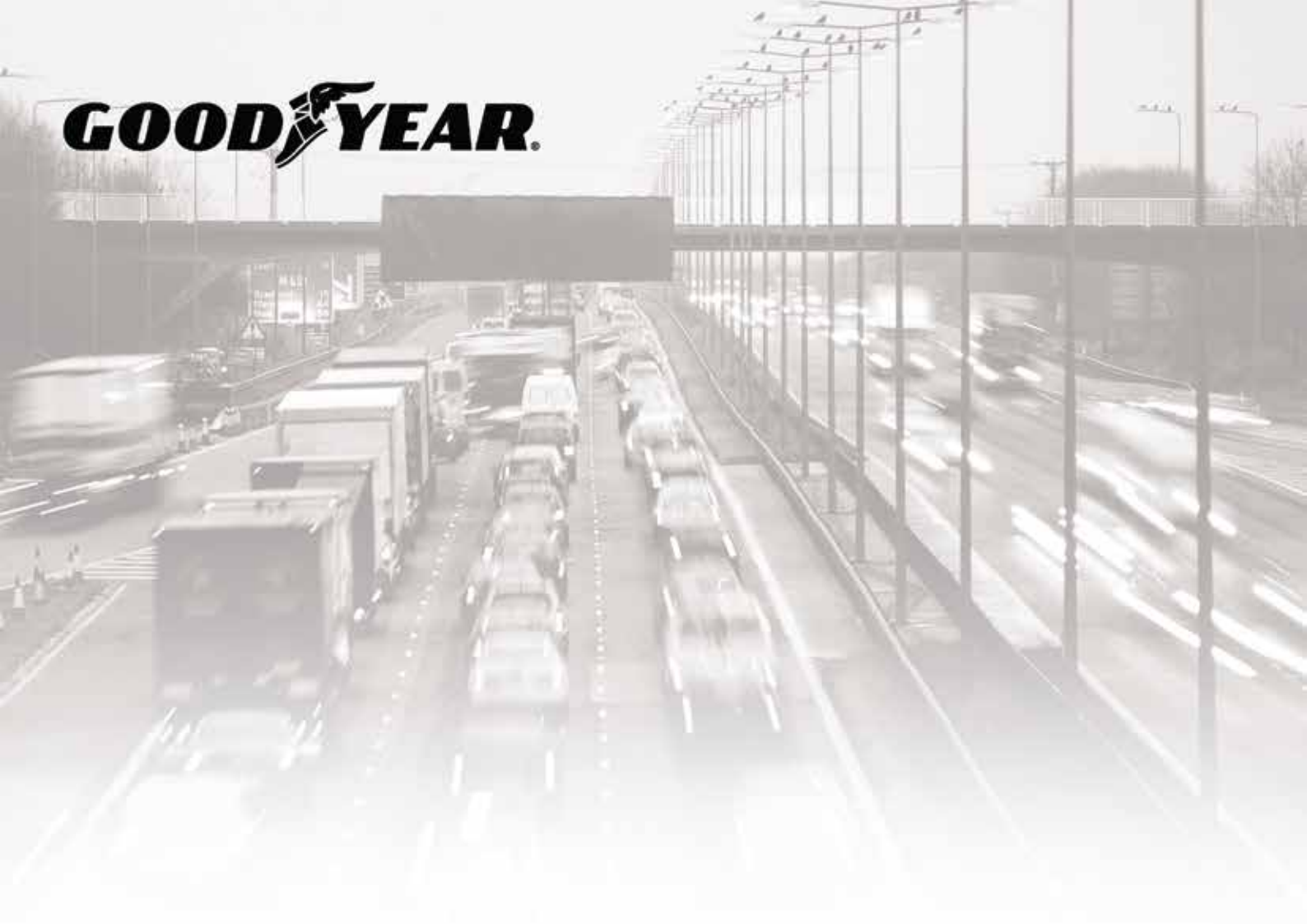
AVAILABLE SIZES

TIRE SIZE	MAX LOAD / TIRE	CAR FITMENT
225/45R18	95	Mercedes-Benz C180/C200/C220, BMW 318d, Mazda 3, Subaru Levorg
235/45R18	98	Porsche Boxster/Cayman 2013 (Front), Lexus GS350/GS450, Lexus RC, Lexus GS/GS Hybrid, Volkswagen Passat, Toyota Camry
245/40R18	97	Subaru WRX/WRX STI, Subaru Impreza STI, Mitsubishi Lancer Evo X, Mercedes-Benz CLA
245/45R18	100	Mercedes-Benz S500, Mercedes-Benz E200, Mercedes-Benz V220, Mercedes-Benz E-Class, BMW 520d, Audi A5, Chevrolet Malibu
255/35R18	94	Mercedes-Benz E-Class
255/40R18	95	Mercedes-Benz SL, Mercedes-Benz CLS
275/40R18	99	BMW 5 Series
245/40R19	98	Volkswagen Tiguan, Audi A4, Audi A6, Jaguar F-Type
265/45ZR19	105	Porsche Panamera (Rear)
275/35R19	100	BMW 5 Series, BMW 6 Series, BMW 7 Series, BMW M3/M4/M5/Z8, Mercedes-Benz AMG BT/CL-Class AMG, Nissan 370Z/Fairlady Z
245/35R20	95	Mercedes-Benz E43 AMG
275/30R20	97	BMW 5 Series, BMW 6 Series, Mercedes-Benz C-Class AMG/E-Class AMG



P A S S E N G E R

GOODYEAR.



ASSURANCE TRIPLEMAX 2



ASSURANCE DURAPLUS 2



DURAPLUS



ASSURANCE TRIPLEMAX 2
STOP FASTER. DRIVE SAFER.
with HYDROTRED TECHNOLOGY



Braking
Performance



Handling
Performance



Comfort
Performance

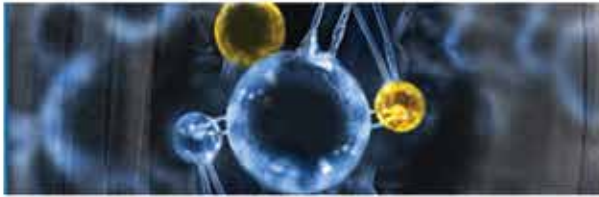
GOODYEAR



ASSURANCE TRIPLEMAX 2

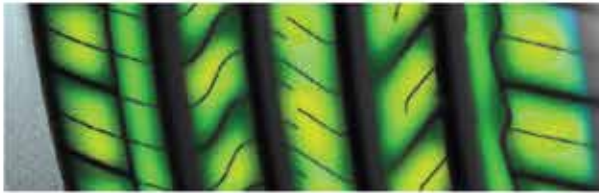


with **HYDROTRED TECHNOLOGY**



BRAKING PERFORMANCE

With HydroTred Technology using boosted compound formulation with additional adhesive resin and innovative asymmetric pattern design to improve braking performance on wet road.



HANDLING PERFORMANCE

The asymmetric tread pattern and cavity design are optimized to create a more squarish footprint and ideal contact pressure to improve handling and steering precision.



COMFORT PERFORMANCE

The tire tread pattern is designed with narrower shoulder grooves, increased number of pitches and reduced noise inducing edges to give drivers a more comfortable and quieter ride.



AVAILABLE SIZES

TIRE SIZE	MAX LOAD / TIRE	CAR FITMENT
175/65R14	82	Toyota Wigo, Toyota Vios, Honda Brio, Honda Brio Amaze, Honda City, Kia Picanto
185/55R15	82	Ford Fiesta, Honda Brio, Honda City, Honda Jazz, Mazda 2, Mitsubishi Mirage G4, Chevrolet Spark, Kia Picanto
185/60R15	84	Toyota Vios, Toyota Yaris, Suzuki Swift, Volkswagen Santana/Santana GTS, Chevrolet Sail
185/65R15	88	Nissan Livina, Nissan Almera, Toyota Avanza, Suzuki Ertiga, Suzuki Dzire, Suzuki Ciaz, Honda Civic, Honda Mobilio, Mitsubishi Xpander, Kia Rio, Mazda 2
195/50R15	82	Chevrolet Aveo
195/55R15	85	Mazda 3, Hyundai Accent, Ford Lynx
195/60R15	88	Honda Accord, Mitsubishi Lancer, Toyota Corolla Altis, Toyota Yaris
195/65R15	91	Mazda 3, Ford Focus, Honda Accord, Chevrolet Spark, Hyundai Elantra, Suzuki SX4, Suzuki APV
205/65R15	94	Nissan Cefiro, Nissan Serena, Toyota Camry, Toyota Innova
185/55R16	83	Honda City, Honda Jazz, Suzuki Swift
195/50R16	84	Ford Fiesta
205/55R16	91	Ford Focus, Honda Civic, Toyota Corolla Altis, Mitsubishi Xpander, Hyundai Accent, Kia Forte, Volkswagen Lavida
205/60R16	92	Ford EcoSport, Ford Focus, Mazda 3, Suzuki SX4 Crossover, Chevrolet Cruze
205/65R16	95	Toyota Innova
215/60R16	95	Mazda CX-3, Volkswagen Beetle, Toyota Camry, Honda Odyssey, Honda Accord, Chevrolet Orlando, Suzuki Vitara
225/60R16	98	Mitsubishi Fuzion
205/50R17	89	BMW 1 Series Coupe, Subaru Impreza, Mazda 3, Nissan Sylphy, Ford EcoSport
215/55R17	94	Honda HR-V, Honda Odyssey, Toyota Camry, Toyota Previa, Toyota Innova, Hyundai Kona, Nissan Juke, Suzuki Vitara
225/45R17	94	BMW 3 Series, Mercedes-Benz C180/C200/ C220, Hyundai Elantra, Kia Forte
225/55R17	97	BMW 3 Series, BMW 5 Series, Subaru Forester

FREEDOM

TO GO FURTHER



120,000KM

110,000KM

100,000KM

90,000KM

ASSURANCE DURAPLUS 2

GO UP TO 110,000 KM

with *TREDLIFE TECHNOLOGY*



Mileage
Performance



Durability
Performance



Quiet
Performance

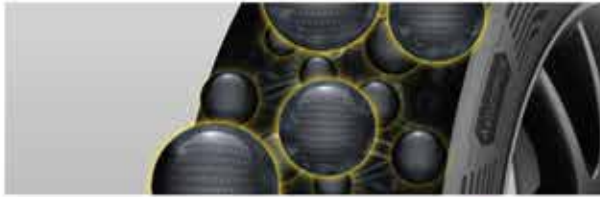
GOODYEAR



ASSURANCE DURAPLUS 2



with **TREDLIFE TECHNOLOGY**



MILEAGE PERFORMANCE

The sipe angles, width and depth of a new symmetrical tread pattern are tuned to minimize irregular wear with more carbon black and additive added to improve tensile strength and wear resistance to ensure high mileage performance.



DURABILITY PERFORMANCE

The tire is strengthened with a minimum of 2 ply construction against side wall impacts and pot holes.



QUIET PERFORMANCE

Added rubber strips between the ply and the liner to reduce tire noise.



AVAILABLE SIZES

TIRE SIZE	MAX LOAD / TIRE	CAR FITMENT
165/55R14	72	Hyundai i10
165/65R14	83	Hyundai Grand i10, Mitsubishi Mirage, Chevrolet Spark, Suzuki Celerio
175/65R14	82	Toyota Wigo, Toyota Vios, Honda Brio, Honda Brio Amaze, Honda City, Kia Picanto
175/70R14	84	Hyundai Accent Hatch, Hyundai Reina, Kia Rio, Kia Soluto, Chevrolet Sail, Volkswagen Santana
185/60R14	82	Chevrolet Aveo, Honda City
185/65R14	86	Nissan Sentra, Ford Lynx, Suzuki Ertiga
185/70R14	88	Toyota Avanza, Toyota Corolla, Nissan Almera
195/70R14	91	Toyota Revo
175/50R15	75	Honda City, Honda Jazz, Kia Picanto
175/65R15	84	Honda City, Honda Jazz

L C V





CARGO MARATHON 2

OUTSTANDING TREADLIFE FOR VANS AND PICK-UPS

with TREDLIFE TECHNOLOGY



Mileage
Performance



Grip
Performance



Durability
Performance

GOODYEAR

GOODYEAR

CARGO MARATHON 2

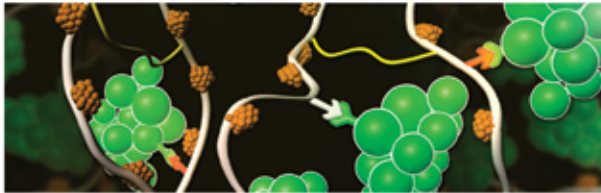


with **TREDLIFE TECHNOLOGY**



MILEAGE PERFORMANCE

The Cargo Marathon 2 tread pattern design provides even footprint pressure distribution and incorporates a new advanced long wearing compound that delivers outstanding mileage for light commercial vehicles.



GRIP PERFORMANCE

An enhanced silica compound that improves contact with the road providing better grip while the tread geometry provides excellent water dispersion on wet roads, greatly reducing the risk of aquaplaning.



DURABILITY PERFORMANCE

Provides increased tread width and robust footprint for enhanced shoulder strength and durability in all conditions.



AVAILABLE SIZES

TIRE SIZE	MAX LOAD / TIRE	CAR FITMENT
195R15C	106/104	Nissan Urvan NV350, Nissan Navara, Suzuki Samurai, Mitsubishi L200, Kia K2500
205/70R15C	106/104	Honda CR-V, Hyundai Starex, Suzuki Jimny, Toyota Hilux
225/70R15C	112/110	Toyota Hiace Grandia
215/70R16C	108/106	Hyundai Starex, Toyota Hiace Commuter



S U V

GOODYEAR.



**EFFICIENTGRIP
PERFORMANCE SUV**



**WRANGLER
AT SILENTRAC**



**WRANGLER
TRIPLEMAX**



EfficientGrip PERFORMANCE SUV

MORE QUIET.

MORE COMFORT. MORE 😎 👍 😊 🎵

with QUIETTRED TECHNOLOGY



Quiet
Performance



Comfort
Performance



Wet
Performance

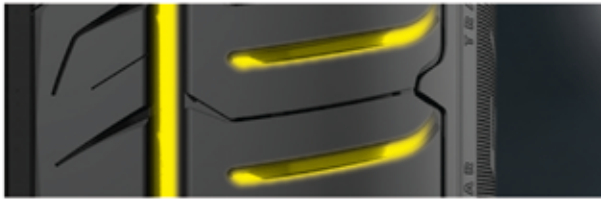
GOODYEAR



EfficientGrip PERFORMANCE SUV



with QUIETTRED TECHNOLOGY



CLOSED GROOVES & SHOULDER DESIGN

Low radiated noise generation through reduced radial air pumping for a lower exterior and interior noise level providing a quiet ride.



SHOCK ABSORBING CONSTRUCTION

FlexContact Technology comprising of specific compound heavy gauge undertread and gum barrier layer provides increased amortization to reduce tire vibration for great comfort.



HIGH PERFORMANCE CAP COMPOUND

New innovative polymer from Germany with optimized microstructure provides increased surface microstructure for better grip on wet road conditions as well as increased intramolecular bonding for precise steering response.



AVAILABLE SIZES

TIRE SIZE	MAX LOAD / TIRE	CAR FITMENT
225/65R17	102	Honda CR-V, Toyota RAV4, Hyundai Tucson, Kia Sportage, Isuzu mu-X, Mazda CX-5, Suzuki Vitara, Nissan X-Trail
235/65R17	108	Honda CR-V, Hyundai Sta. Fe, Kia Sorento
265/65R17	112	Toyota Fortuner, Mitsubishi Montero Sport, Ford Everest, Ford Ranger, Toyota Hilux, Mazda BT-50
235/60R18	107	Kia Carnival, Hyundai Sta. Fe, Honda CR-V
255/60R18	112	Nissan Navara, Nissan Terra, Ford Everest, Isuzu mu-X, Isuzu D-Max, Mazda CX-9
265/60R18	110	Ford Everest, Ford Ranger, Chevrolet Trailblazer, Chevrolet Colorado, Chevrolet Colorado High Country Storm, Mitsubishi Montero Sport, Mitsubishi Strada, Toyota Fortuner, Toyota Prado, Mitsubishi Pajero



WRANGLER AT SILENTTRAC

**ENJOY THE QUIET
CONQUER THE TOUGH**

with DURAWALL TECHNOLOGY



All-Terrain
Performance



Quiet
Performance



Mileage
Performance

GOODYEAR



WRANGLER AT SILENTTRAC



with DURAWALL TECHNOLOGY



ALL-TERRAIN PERFORMANCE

Designed with DuraWall Technology, the robust compound and thick gauge layer provide greater resistance against cuts and punctures for off-road terrain



QUIET PERFORMANCE

With thicker rubber under tread to absorb vibration and angled block tread design to deliver superior quiet performance



MILEAGE PERFORMANCE

Optimized cavity shape with more wearable volume, the tire is designed for superior mileage performance



AVAILABLE SIZES

TIRE SIZE	MAX LOAD / TIRE	CAR FITMENT
225/75R15	102T	Toyota Super Grandia
235/70R15	103T	Isuzu Crosswind XUV/Sportivo
235/75R15	109T	Ford Ranger
255/70R15C	112/110S	Toyota Hilux
205R16LT	112/110T	Nissan Navara, Mitsubishi Strada GL
245/70R16	111T	Ford Everest, Ford Ranger, Toyota Hilux, Chevrolet Trailblazer, Chevrolet Colorado, Isuzu D-Max, Isuzu mu-X, Isuzu Trooper
265/70R16	112H	Toyota Fortuner, Mitsubishi Pajero 4x2, Toyota Prado, Nissan Patrol
265/65R17	112H	Toyota Fortuner, Mitsubishi Montero Sport, Ford Everest, Ford Ranger, Toyota Hilux, Mazda BT-50
265/60R18	110H	Ford Everest, Ford Ranger, Chevrolet Trailblazer, Chevrolet Colorado, Chevrolet Colorado High Country Storm, Mitsubishi Montero Sport, Mitsubishi Strada, Toyota Fortuner, Toyota Prado, Mitsubishi Pajero



WRANGLER TRIPLEMAX

**SHORTER WET BRAKING,
MORE FUN DRIVING.**

with *HYDROGRIP TECHNOLOGY*



Superior Braking
Performance



Wet
Performance



Road Hazard
Resistant

GOODYEAR



WRANGLER TRIPLEMAX

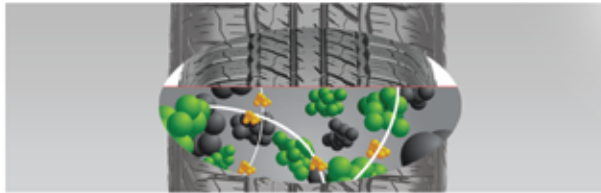


with **HYDROGRIP TECHNOLOGY**



SUPERIOR BRAKING PERFORMANCE

The HydroGrip Technology, used for the Wrangler TripleMax is made with large blocks and high number of biting edges to increase contact to road asperity. This delivers better braking and grip on wet and dry roads.



WET PERFORMANCE

The HydroGrip Technology, used for the Wrangler TripleMax is made with enhanced ESBR compound for multipurpose performances to improve braking and grip on both wet and dry roads.



ROAD HAZARD RESISTANT

The Wrangler TripleMax is designed with rim flange protector, which provides more material on the sidewall to protect rim and tire against road hazard.



AVAILABLE SIZES

TIRE SIZE	MAX LOAD / TIRE	CAR FITMENT
205/70R15	96	Honda CR-V, Hyundai Starex, Suzuki Jimny, Toyota Hilux
225/70R15	104	Mitsubishi L200, Toyota Hiace GL
235/70R15	103	Isuzu Crosswind XUV/Sportivo
215/65R16	98	Nissan X-Trail, Toyota Alphard, Toyota Rush
215/70R16	100	Ford Escape, Hyundai Grand Starex
225/70R16	103	Nissan Navara NP300, Ford Expedition
235/60R16	100	Honda CR-V, Toyota RAV4, Hyundai Tucson, Kia Sportage, Chevrolet Captiva
235/70R16	106	
245/70R16	111	Ford Everest, Ford Ranger, Toyota Hilux, Chevrolet Trailblazer, Chevrolet Colorado, Isuzu D-Max, Isuzu mu-X, Isuzu Trooper
265/70R16	112	Toyota Fortuner, Mitsubishi Pajero 4x2, Toyota Prado, Nissan Patrol
225/60R17	99	Hyundai Tucson, Kia Sportage, Ford Escape, Subaru XV, Subaru Forester
225/65R17	102	Honda CR-V, Toyota RAV4, Hyundai Tucson, Kia Sportage, Isuzu mu-X, Mazda CX-5, Suzuki Vitara, Nissan X-Trail
235/65R17	108	Honda CR-V, Hyundai Sta. Fe, Kia Sorento
245/65R17	111	Mitsubishi Strada GLS
265/65R17	112	Toyota Fortuner, Mitsubishi Montero Sport, Ford Everest, Ford Ranger, Toyota Hilux, Mazda BT-50

4 X 4



GOODYEAR



**WRANGLER
AT ADVENTURE**



**WRANGLER
DURATRAC**



**WRANGLER
MTR WITH KEVLAR**



50% Off-Road
50% On-Road



WRANGLER

ALL-TERRAIN ADVENTURE WITH KEVLAR®

OUR MOST VERSATILE ALL-TERRAIN TIRE

WITH THE TOUGHNESS OF DUPONT™ KEVLAR® TO GO
OFF-ROAD AT A MOMENT'S NOTICE



Mileage



Off-Road



Durability



Quiet



GOODYEAR

WRANGLER ALL-TERRAIN ADVENTURE WITH KEVLAR®

- **RUGGED STRENGTH** provided by a layer of DuPont™ Kevlar®
- **HELPS PREVENT CUTS IN THE SIDEWALL** with its DURAWALL Technology
- **VERSATILE OFF-ROAD TRACTION IN WET, MUDDY CONDITIONS** as a result of its open tread pattern
- **SUPERB TRACTION IN THE RAIN** thanks to a special tread compound and biting edges that help grip the road
- **PRO-GRADE PACKAGE FOR HEAVY DUTY ON LT SIZES INCLUDES:** Two layers of Kevlar®, 30% more steel for enhanced toughness



AVAILABLE SIZES

TIRE SIZE	MAX LOAD / TIRE	CAR FITMENT
255/70R16	111	Nissan Navara, Ford Ranger
265/70R16	112	Toyota Fortuner, Mitsubishi Pajero 4x2, Toyota Prado, Nissan Patrol
LT265/75R16	123/120	
265/65R17	112	Toyota Fortuner, Mitsubishi Montero Sport, Ford Everest, Ford Ranger, Toyota Hilux, Mazda BT-50
265/70R17	115	Toyota FJ Cruiser
265/50R20	107	Ford Everest, Ford Explorer, Jeep Grand Cherokee
275/55R20	113	Ford Expedition



70% Off-Road
30% On-Road



WRANGLER DURATRAC

A WORKHORSE TIRE FOR RUGGED OFF-ROAD
TERRAIN THAT STILL OFFERS A QUIETER RIDE
ON PAVED ROADS.



Handling



Grip



Durability

GOODYEAR



WRANGLER DURATRAC

- SELF-CLEANING SHOULDER BLOCKS** clear the tread of debris for enhanced dirt, gravel and mud traction.
- TRACTIVEGROOVE TECHNOLOGY** offers enhanced traction in deep mud.
- HIGHLY ANGLED CENTER TREAD BLOCKS** help provide enhanced traction and lateral stability while reducing road noise.
- RIM PROTECTOR** helps protect wheels from accidental curb damage.



AVAILABLE SIZES

TIRE SIZE	MAX LOAD / TIRE	CAR FITMENT
265/70R16	112	Toyota Fortuner, Mitsubishi Pajero 4x2, Toyota Prado, Nissan Patrol
245/70R17	110	
265/65R17	112	Toyota Fortuner, Mitsubishi Montero Sport, Ford Everest, Ford Ranger, Toyota Hilux, Mazda BT-50
265/70R17	115	Toyota FJ Cruiser
LT285/70R17	116/113	Ford Ranger Raptor
265/60R18	110	Ford Everest, Ford Ranger, Chevrolet Trailblazer, Chevrolet Colorado, Chevrolet Colorado High Country Storm, Mitsubishi Montero Sport, Mitsubishi Strada, Toyota Fortuner, Toyota Prado, Mitsubishi Pajero
275/55R20	113	Ford Expedition
LT285/60R20	125/122	



90% Off-Road
10% On-Road



WRANGLER MTR WITH KEVLAR[®]

EXTREME OFF-ROAD EXPEDITIONS



Off-Road



Durability



Handling



Grip





WRANGLER MTR WITH KEVLAR®

- DUPONT™ KEVLAR® REINFORCED SIDEWALLS** help increase sidewall puncture resistance by 35% for confidence in tough terrain.
- HARDWORKING WRAPAROUND TREAD** offers enhanced sidewall traction in deep mud and rocks.
- INNOVATIVE ASYMMETRIC TREAD DESIGN** offers aggressive off-road traction while maintaining enhanced handling on the road.
- ADVANCED SILICA RUBBER** for superb off-road and wet traction.



AVAILABLE SIZES

TIRE SIZE	MAX LOAD / TIRE	CAR FITMENT
LT265/75R16	123/120	
LT285/75R16	126/123	
LT305/70R16	124/121	
LT315/75R16	121	
LT245/70R17	119/116	
35x12.50R17LT	111	
37x12.50R17LT	124	
LT285/70R17	121/118	Ford Ranger Raptor
35x12.50R18LT	123	

5-YEAR WARRANTY

We know you want to get the most out of your tires. That's why we confidently offer a 5-year warranty upon purchase of your Goodyear passenger tires.



Goodyear Limited Warranty

Warranty against manufacturer's defects FIVE (5) years from date of purchase.



Goodyear Manufacturer's Warranty

Warranty against manufacturer's defects FIVE (5) years from date of manufacture.

DRIVE WORRY FREE WITH GOODYEAR TIRES



Goodyear's Worry Free Assurance helps ensure that you won't be left stranded in the middle of nowhere. Get 24/7 roadside assistance, complimentary servicing and personal accident insurance, all for FREE. It's all part of our commitment to give you a better drive.



24/7 Service Hotline

Guaranteed Worry Free experience any time of the day, any day of the week. Call the exclusive Goodyear Worry Free Assurance Hotline at (02) 8459-4770 and we'll ensure you won't be left stranded in the middle of nowhere.



Emergency Roadside Assistance for 1 year

An enjoyable drive isn't just about the tires, which is why we provide tire repair assistance and free towing in the event your car can't run due to tire damage, vehicle breakdown or accidents.



Road Hazard Protection for 6 months

Enjoy free replacement tires or credit value within 6 months from the date of purchase in the event of road hazard damage that is beyond repair.



Personal Accident Insurance for 1 year

Because we take worry free to the next level, drivers of the covered vehicle can get up to Php 50,000.00 insurance coverage.



0% Installment Plan

Enjoy 0% interest installment plan up to 6 months for selected credit cards at participating Goodyear Autocare stores nationwide.





WORRY FREE ASSURANCE PROGRAM MECHANICS

Minimum purchase of two (2) eligible Goodyear tires of rim 14" and above of the same size and pattern

Eligible Tire Patterns:

Assurance DuraPlus
Assurance DuraPlus 2
Assurance FuelMax
Assurance TripleMax
Assurance TripleMax 2
Eagle F1 Directional 5
Eagle F1 Asymmetric 2
Eagle F1 Asymmetric 3
Wrangler TripleMax
EfficientGrip SUV
EfficientGrip Performance SUV
Wrangler AT/SA
Wrangler AT SilentTrac
Wrangler All-Terrain Adventure
Wrangler DuraTrac
Wrangler MTR with Kevlar

24/7 HOTLINE: (02) 8459-4770

REGISTER IN 1 OF 3 WAYS:



www.goodyear.com.ph



GoodyearPhilippines



Send an SMS to 0917-807-3321



Goodyear Philippines, Inc.

21st floor, Twenty-five Seven McKinley, 25th St. corner 7th Ave., McKinley Parkway, Bonifacio Global City, Taguig 1634

www.goodyear.com.ph |  GoodyearPhilippines |  Goodyear_Philippines